

• WOODMONT PARK •
601 JEFFERSON ROAD – SUITE 205
PARSIPPANY, NEW JERSEY

**FOR SALE
OR LEASE**

PROPERTY SPECS:

Building Size: 21,881 SF

Available Space: 984 SF (Suite 205)

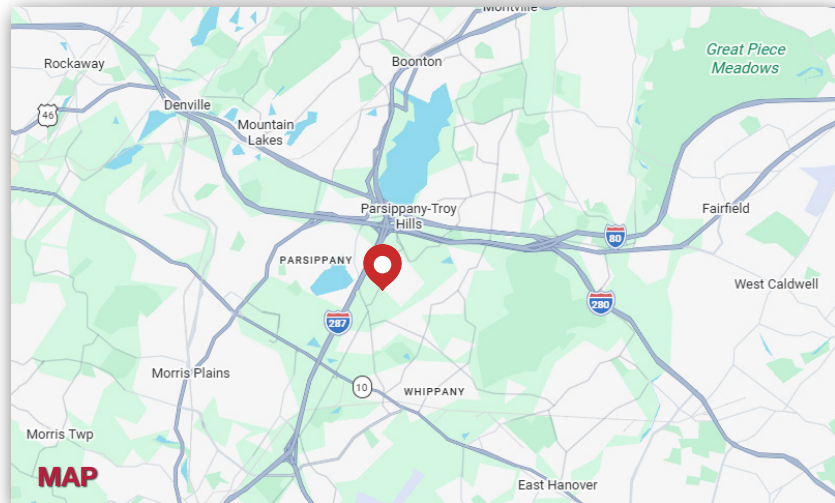
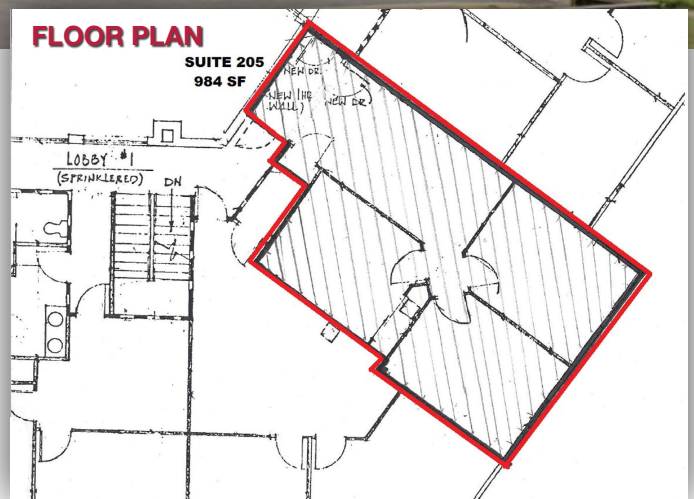
Parking: 5/1,000 SF

Use: General Office

Lease Rate: \$20 PSF Gross + TE

Sale Price: \$165 PSF

Highlights: Convenient to all major highways. Nearby amenities include restaurants, shopping, ATM's, hotels, etc.



For more information, please our office at 973-299-0900 or contact:

Brian Wilson, SIOR

C: 973-219-1331

E: bwilson@resource-realty.com

Gregory J. Sabato, SIOR

C: 908-403-5559

E: gsabato@resource-realty.com



All information furnished is from sources deemed reliable. No representation is made as to the accuracy thereof and it is submitted subject to error, omission, change of price, prior sale or lease and withdrawal without notice. Any commission due cooperating brokers is subject to all of the terms and conditions upon which we and our clients have agreed.

WWW.RESOURCE-REALTY.COM