

FOR LEASE - 4,000 SF

50 Williams Parkway, East Hanover, NJ East Hanover Business Park

Exclusive Leasing Agent:



Resource Realty
Corporate Real Estate Services

35 Years of Dedication & Expertise

www.resource-realty.com



PROPERTY SPECS:

Total Available Space: 4,000 SF (Unit K)

Office Area: \pm 1,000 SF

Ceiling Height: 18' clear

Loading: 1 Loading Dock

Power: 200 Amps @ 277/470 Volts

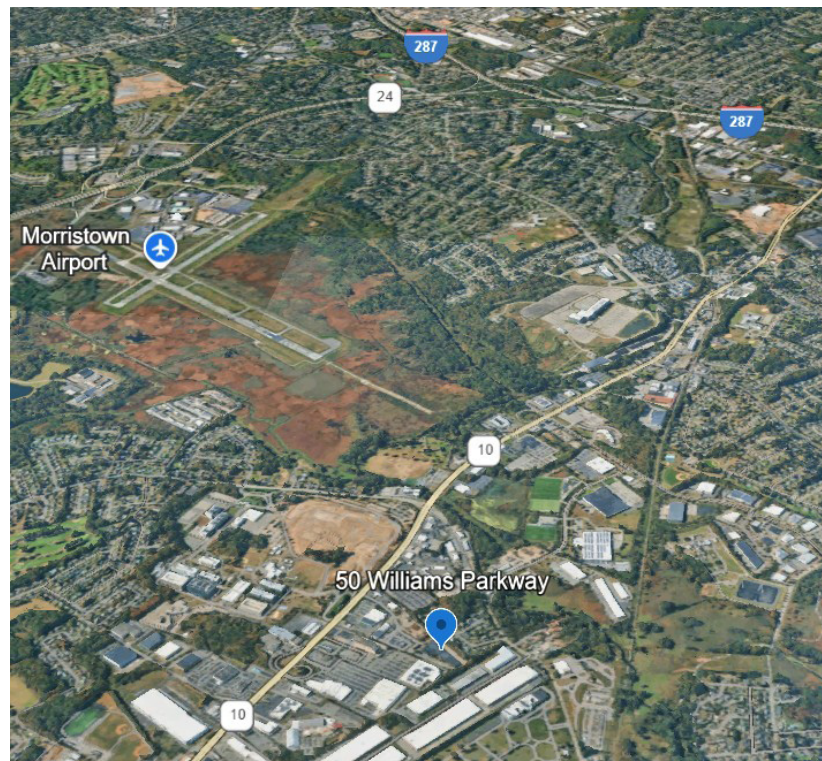
Lease Rate: \$16.50 PSF NNN

OPEX: \pm \$3.24 PSF

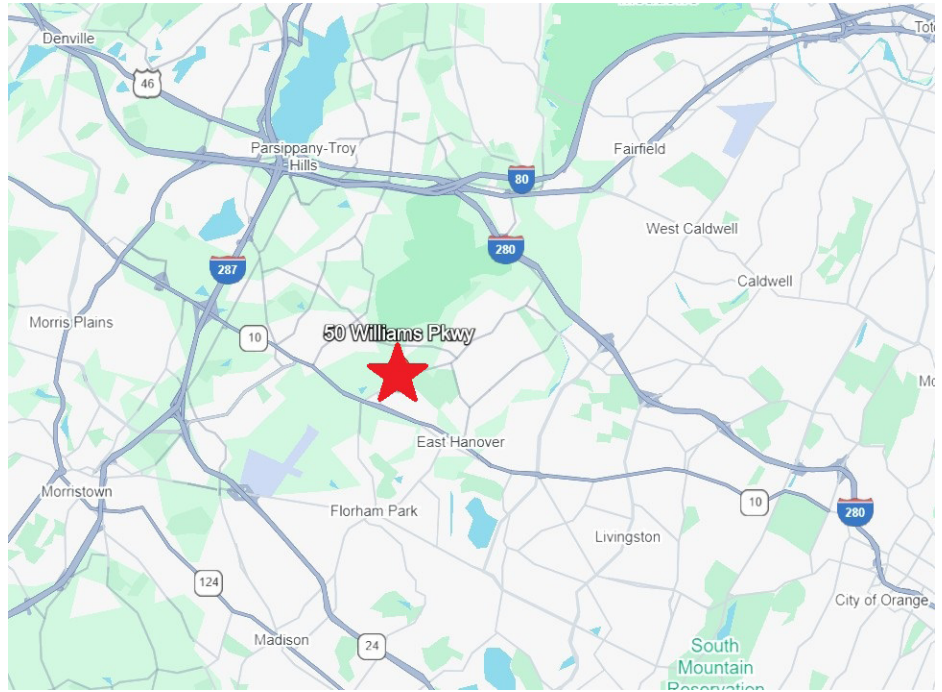
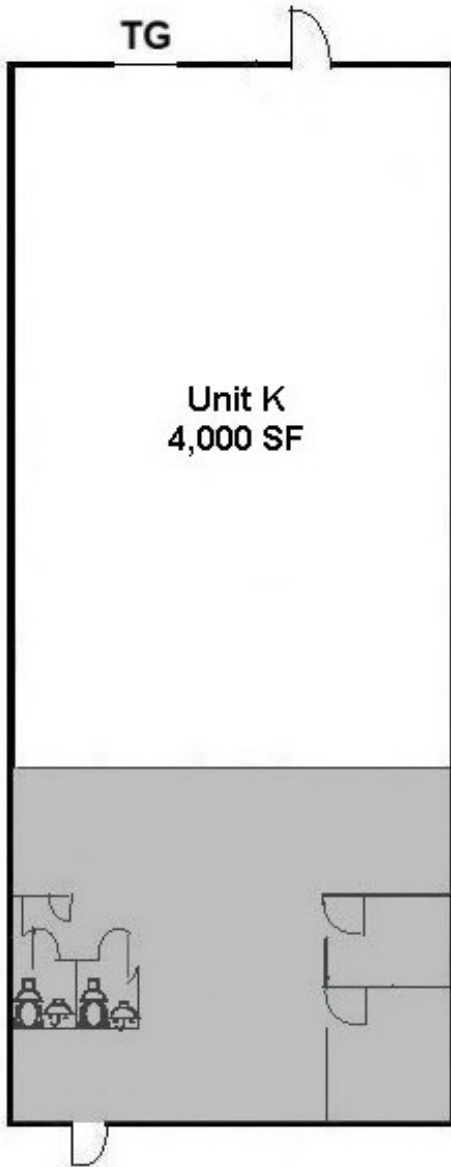
Available: November 2025

Zoning: I-3

Comments: Unit is clear span. Located directly off of Route 10.



Floor Plan



Location Highlights:

| Highway | Approx. Distance | Drive Time | Access Route |
|----------|------------------|----------------|-------------------------------------|
| Route 10 | ~0.3 miles | ~2 minutes | Direct access from Williams Parkway |
| I-280 | ~5.6 miles | ~14 minutes | County Hwy 632 & County Hwy 611 |
| I-287 | ~6.5 miles | ~12-15 minutes | Via Route 10 — Parsippany Road |
| I-80 | ~7 miles | ~12-15 minutes | Via Route 10 — I-287 North — I-80 |

For more information, please contact:

Gregory J. Sabato, SIOR

gsabato@resource-realty.com

C: 908-403-5559

Brian Wilson, SIOR

bwilson@resource-realty.com

C: 973-219-1331

O: 973-299-0900

Exclusive Leasing Agent:



Resource Realty
Corporate Real Estate Services

35 Years of Dedication & Expertise

www.resource-realty.com