

# Commerce Park Commons

## 273 Franklin Road

### Randolph, NJ



## CONDOS FOR SALE – *Fully Air-Conditioned*

### PROPERTY SPECS:

Property Type:	Industrial Condos
Total Building Size:	26,070 SF *Units from 2,600 SF can be combined
Sale Price:	Call for pricing
Ceiling Height:	12' clear
Loading:	1 Tailgate per 2,600 SF unit
Parking:	83 spaces
Taxes & CAM:	Estimated \$4.00 PSF
Utilities:	All units separately metered
Zone:	1-1 (Industrial District)
Permitted uses include:	Warehouse/distribution, manufacturing, office/lab and commercial recreation.

**Comments:** Newly renovated industrial condos in multiple sizes for sale located in close proximity to Route 10 and Route 46. Available immediately.



Exclusive Leasing Agent:

For more information, please contact:



*35 Years of Dedication & Expertise*

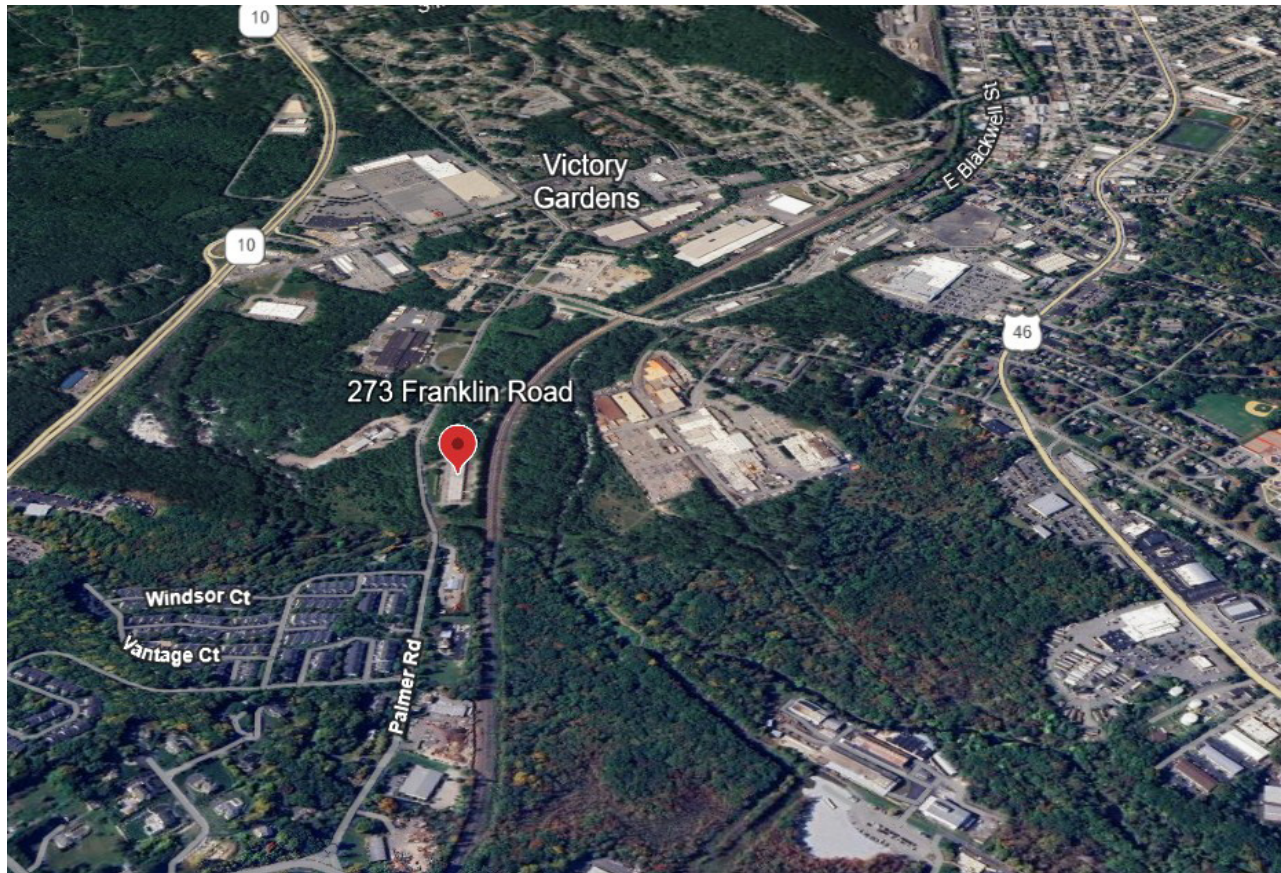
Brian Wilson, SIOR  
[bwilson@resource-realty.com](mailto:bwilson@resource-realty.com)  
C: 973-219-1331

Tom Consiglio, SIOR  
[tconsiglio@resource-realty.com](mailto:tconsiglio@resource-realty.com)  
C: 551-427-5003

Office: 973-299-0900 • [www.resource-realty.com](http://www.resource-realty.com)



[www.commerceparknj.com](http://www.commerceparknj.com)



Exclusive Leasing Agent:



*35 Years of Dedication & Expertise*

**973-299-0900**

**www.resource-realty.com**

All information furnished is from sources deemed reliable. No representation is made as to the accuracy thereof and it is submitted subject to error, omission, change of price, prior sale or lease and withdrawal without notice. Any commission due cooperating brokers is subject to all of the terms and conditions upon which we and our clients have agreed.