

# MEDICAL FOR LEASE



**35 Green Pond Road, Rockaway, NJ**

## PROPERTY SPECS:

**Property Type:** Medical  
**Available Space:** 2,500 SF (First Floor)  
**Includes:** Reception area, 7 exam rooms,  
3 offices, breakroom and  
2 private baths  
**Lease Rate:** \$25.00 per SF Gross +  
Tenant Electric  
**Parking:** 4/1,000 SF  
**Land Area:** 1 acre  
**Zone:** R-P

**Comments:** First Floor Turnkey Medical space available. The building is located close to Route 80 and Route 46, including a full building backup generator.



Front entrance foyer

*For more information, please contact:*

**Brian Wilson, SIOR**  
[bwilson@resource-realty.com](mailto:bwilson@resource-realty.com)  
C: 973-219-1331

**Office: 973-299-0900 • [www.resource-realty.com](http://www.resource-realty.com)**

*Exclusive Leasing Agent:*



**Resource Realty**  
Corporate Real Estate Services

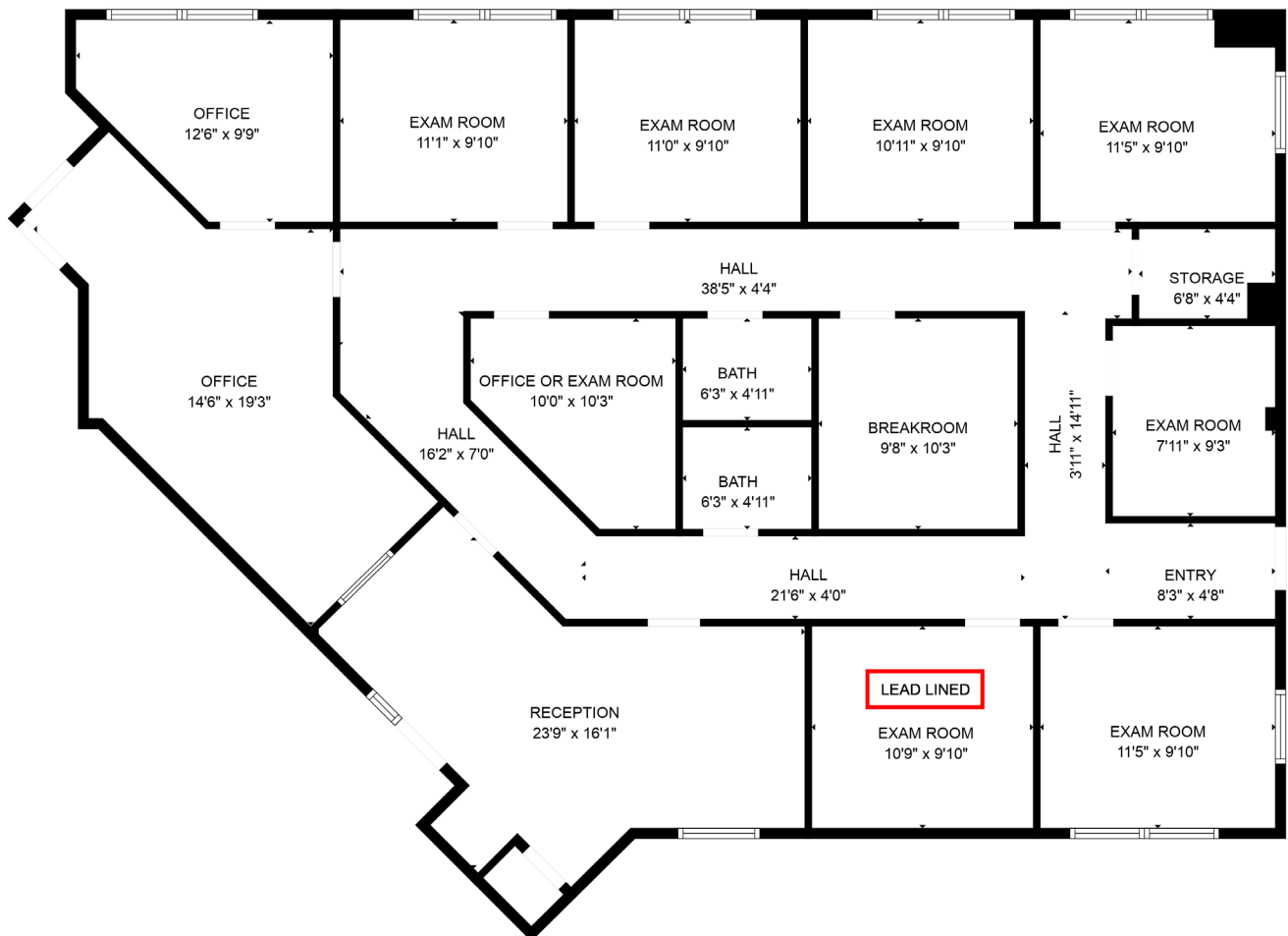
*35 Years of Dedication & Expertise*



Reception Area



Exam Room



Exclusive Leasing Agent:



35 Years of Dedication & Expertise

973-299-0900

www.resource-realty.com

All information furnished is from sources deemed reliable. No representation is made as to the accuracy thereof and it is submitted subject to error, omission, change of price, prior sale or lease and withdrawal without notice. Any commission due cooperating brokers is subject to all of the terms and conditions upon which we and our clients have agreed.