

# 19 Gloria Lane Fairfield, NJ



## FOR SALE

### PROPERTY SPECS:

**Building Size:** +/- 12,000 SF  
**Possession:** Immediately upon closing  
**Taxes:** +/- \$2.50 PSF  
**Lot Size:** 1.1 acres  
**Parking:** 3.0 per 1,000 SF  
**Loading:** 2 TG  
**Ceiling Height:** 15' clear  
**Power:** 600 Amps@240V

**Comments:** Fully air-conditioned.  
Close proximity to  
Routes 80, 46 and 287.



*For more information, please contact:*

Gregory J. Sabato, SIOR  
[gsabato@resource-realty.com](mailto:gsabato@resource-realty.com)

Brian Wilson, SIOR  
[bwilson@resource-realty.com](mailto:bwilson@resource-realty.com)

973-299-0900

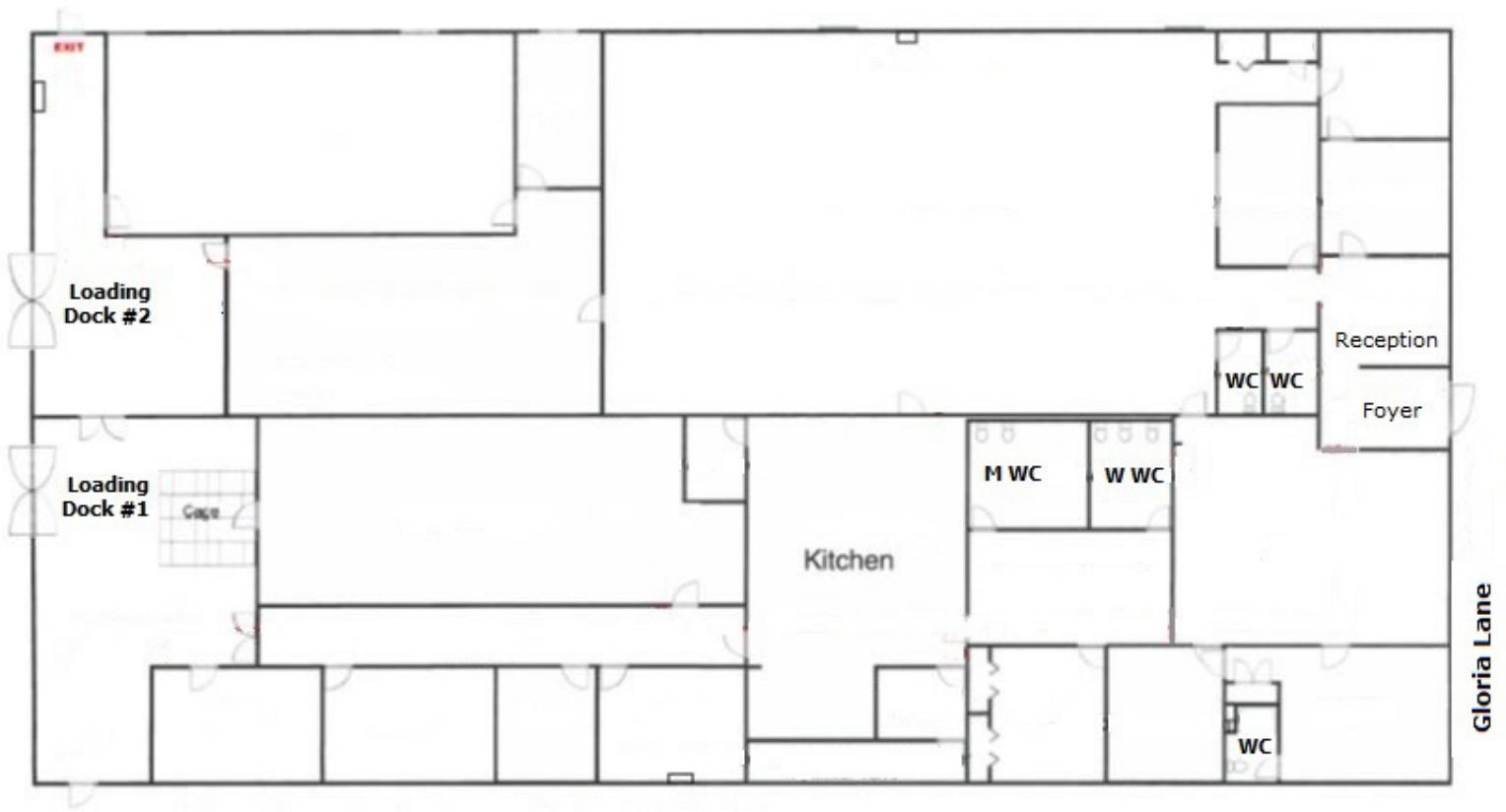
*Exclusive Leasing Agent:*



**Resource Realty**  
Corporate Real Estate Services

[www.resource-realty.com](http://www.resource-realty.com)

### Audrey Place



All information furnished is from sources deemed reliable. No representation is made as to the accuracy thereof and it is submitted subject to error, omission, change of price, prior sale or lease and withdrawal without notice. Any commission due cooperating brokers is subject to all of the terms and conditions upon which we and our clients have agreed.

Exclusive Leasing Agent:



973-299-0900  
[www.resource-realty.com](http://www.resource-realty.com)