

34 E. 25th Street Paterson, NJ

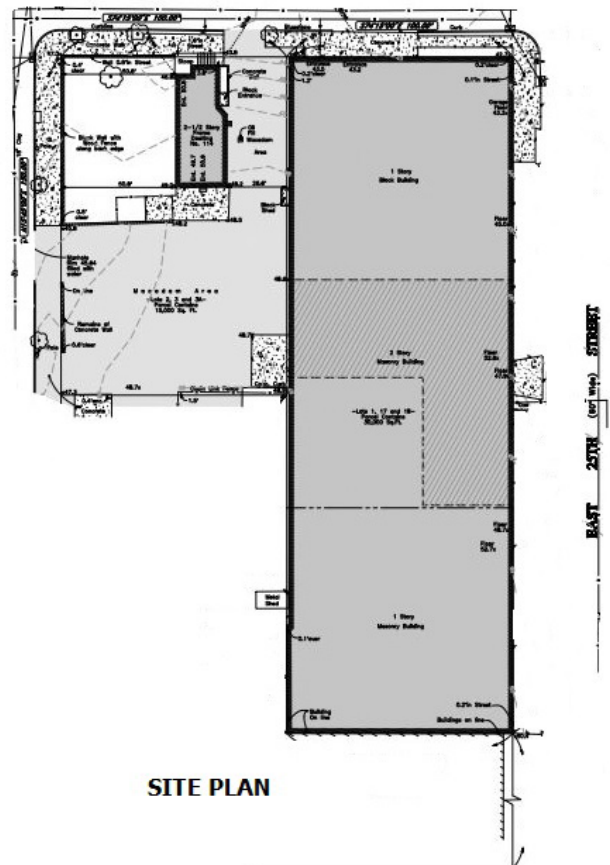


FOR SALE

PROPERTY SPECS:

Building Size:	32,520 SF
Lot Size:	1.03 acres
Office Area:	+/- 2,520 SF
Ceiling Height:	12' - 26' clear
Loading:	<ul style="list-style-type: none">• Two (2) interior TG• One (1) exterior TG• Two (2) drive-in doors
Outside Storage/Loading:	+/- 15,000 SF
Parking:	20 cars
Taxes:	\$2.45 PSF
Utilities:	Gas/Public Water & Sewer
Zoning:	I-2 (Industrial)

Comments: Rare opportunity to own free-standing building with storage yard. Property has immediate access to Route 20 and is in close proximity to Routes 208, 80 and 17.



For more information, please contact:

Tom Consiglio, SIOR
tconsiglio@resource-realty.com
551-4274-5003

Gregory J. Sabato, SIOR
gsabato@resource-realty.com
908-403-5559

973-299-0900

Exclusive Leasing Agent:

RR
Resource Realty
Corporate Real Estate Services

www.resource-realty.com



All information furnished is from sources deemed reliable. No representation is made as to the accuracy thereof and it is submitted subject to error, omission, change of price, prior sale or lease and withdrawal without notice. Any commission due cooperating brokers is subject to all of the terms and conditions upon which we and our clients have agreed.

Exclusive Leasing Agent:



973-299-0900
www.resource-realty.com