

378 – 380 Millburn Avenue Millburn, New Jersey



FOR LEASE – OFFICE / RETAIL SPACE

PROPERTY SPECS:

	Space Available	Lease Rate
1st Floor Retail Space:	2,600 SF (Divisible-to 1,200 to 1,400 SF)	\$39.00 NNN with separately metered utilities
2nd Floor Office Space:	3,900 SF (Divisible to 1,300 SF)	\$35.00 Gross + Electric; utilities at pro rata share

Parking: 6 reserved spaces (only for 2nd floor office space)

Land Area: .24 acres

Zone: B-4

Comments: Brand new construction in the heart of downtown Millburn with easy access to Routes 25 and 78. Building is elevated and will also include electric vehicle charging stations.



For more information, please contact:

Brian Wilson, SIOR
bwilson@resource-realty.com

973-299-0900

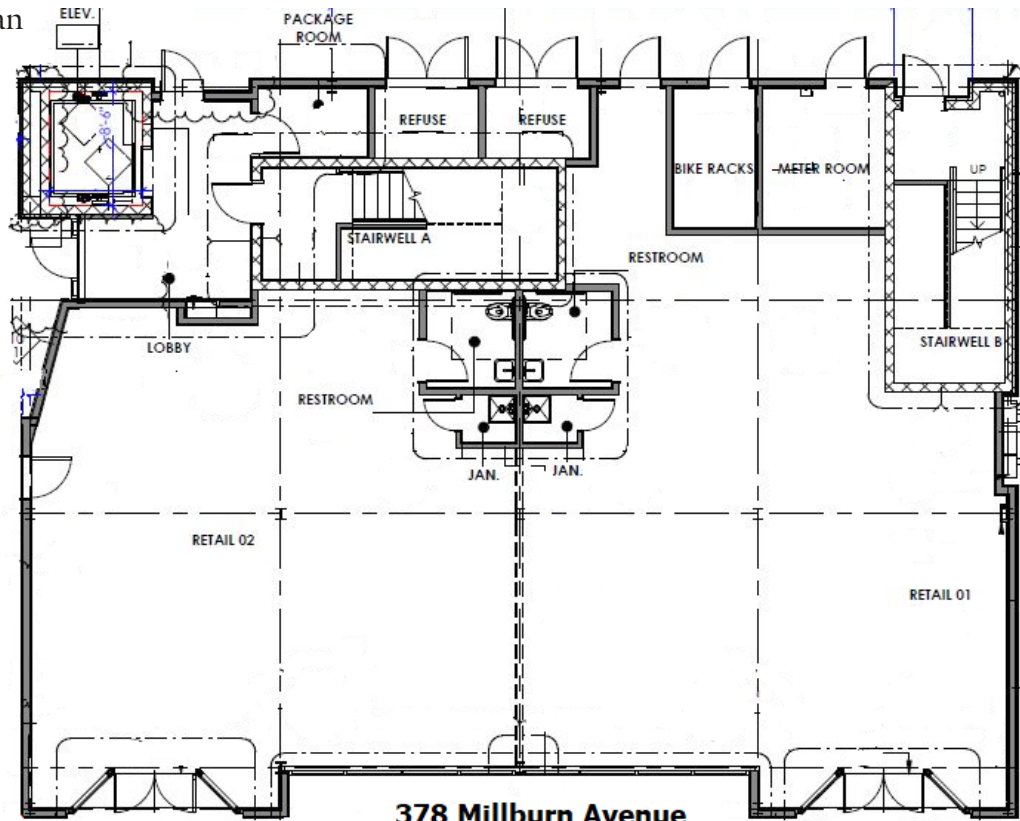
Exclusive Leasing Agent:



Resource Realty
 Corporate Real Estate Services

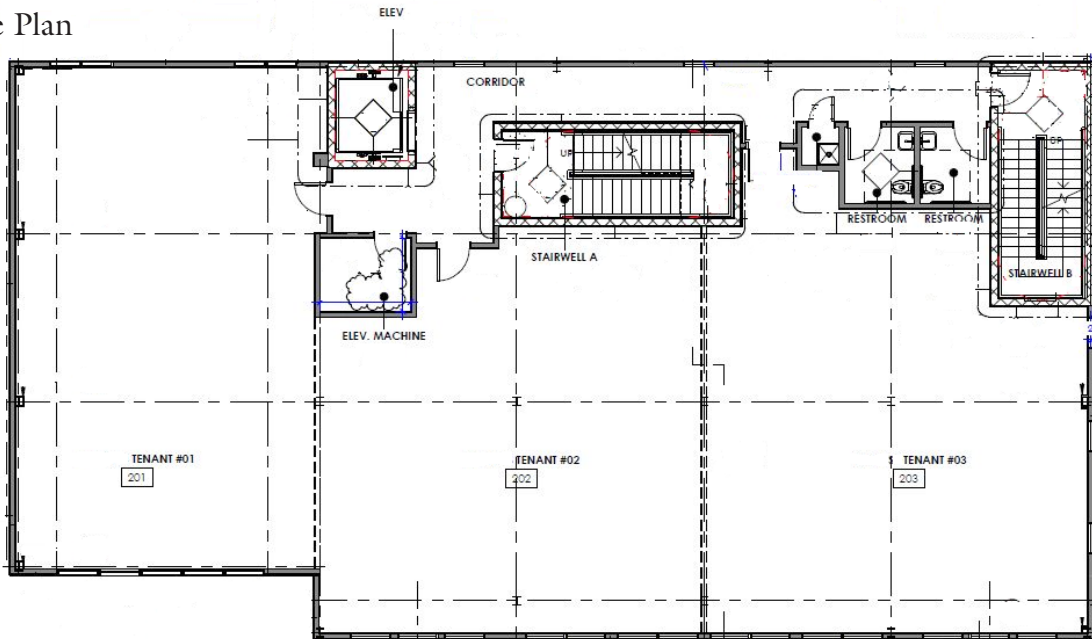
www.resource-realty.com

1st Floor Retail Plan



**378 Millburn Avenue
1st Floor Retail Plan**

2nd Floor Office Plan



**378 Millburn Avenue
2nd Floor Office Plan**

All information furnished is from sources deemed reliable. No representation is made as to the accuracy thereof and it is submitted subject to error, omission, change of price, prior sale or lease and withdrawal without notice. Any commission due cooperating brokers is subject to all of the terms and conditions upon which we and our clients have agreed.

Exclusive Leasing Agent:



973-299-0900
www.resource-realty.com