

# 378 – 380 Millburn Avenue Millburn, New Jersey



## FOR LEASE – OFFICE SPACE

### PROPERTY SPECS:

2nd Floor Office Space:	Space Available	Lease Rate
	5,150 SF (Divisible to +/- 1,700 SF)	\$35.00 PSF Gross plus utilities

**Parking:** 6 reserved spaces

**Land Area:** .24 acres

**Zone:** B-4

**Comments:** Brand new construction in the heart of downtown Millburn with easy access to Routes 25 and 78. Building is elevated and will also include electric vehicle charging stations.



For more information, please contact:

Brian Wilson, SIOR  
[bwilson@resource-realty.com](mailto:bwilson@resource-realty.com)

973-299-0900

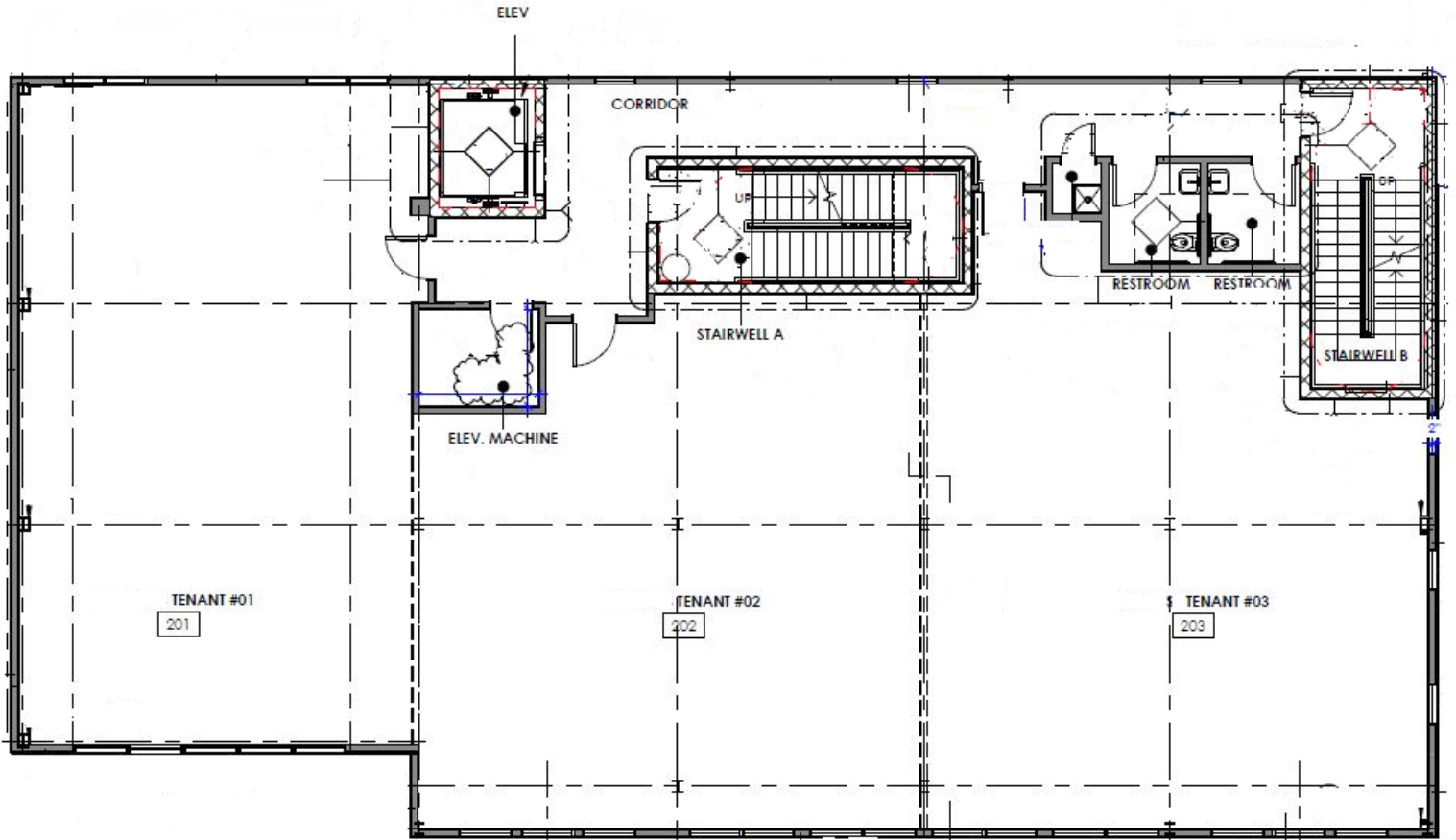
Exclusive Leasing Agent:



Resource Realty  
 Corporate Real Estate Services

[www.resource-realty.com](http://www.resource-realty.com)

# 2nd Floor Office Plan



**378 Millburn Avenue  
2nd Floor Office Plan**

All information furnished is from sources deemed reliable. No representation is made as to the accuracy thereof and it is submitted subject to error, omission, change of price, prior sale or lease and withdrawal without notice. Any commission due cooperating brokers is subject to all of the terms and conditions upon which we and our clients have agreed.

Exclusive Leasing Agent:



973-299-0900  
[www.resource-realty.com](http://www.resource-realty.com)