

230B Neelytown North Road Hamptonburgh, NY



FOR LEASE (UNDER CONSTRUCTION)

PROPERTY SPECIFICATIONS:

Building Size:	245,000 SF
Office Area:	6,300 SF spec office (in NE corner)
Land:	62.96 acres
Ceiling:	30' clear
Dock Doors:	Thirty-eight 9' x 10' doors
Drive-in Ramp Doors:	Two 14' x 16' drive-in doors
Speed Bays:	60' deep x 55' wide
Power:	2000A 3-phase 277/480V service
Car Parking:	246 standard parking stalls
Fire Protection:	ESFR
Column Spacing:	54' x 58'
Warehouse Heat:	Gas-fired unit heaters
Warehouse Lighting:	LED lighting, 25fc
Utilities:	Central Hudson Gas & Electric, well water and septic

For more information, please contact:

Tom Consiglio, SIOR
tconsiglio@resource-realty.com

Scott Peck, SIOR
speck@resource-realty.com

Todd Hali
thali@resource-realty.com

973-299-0900

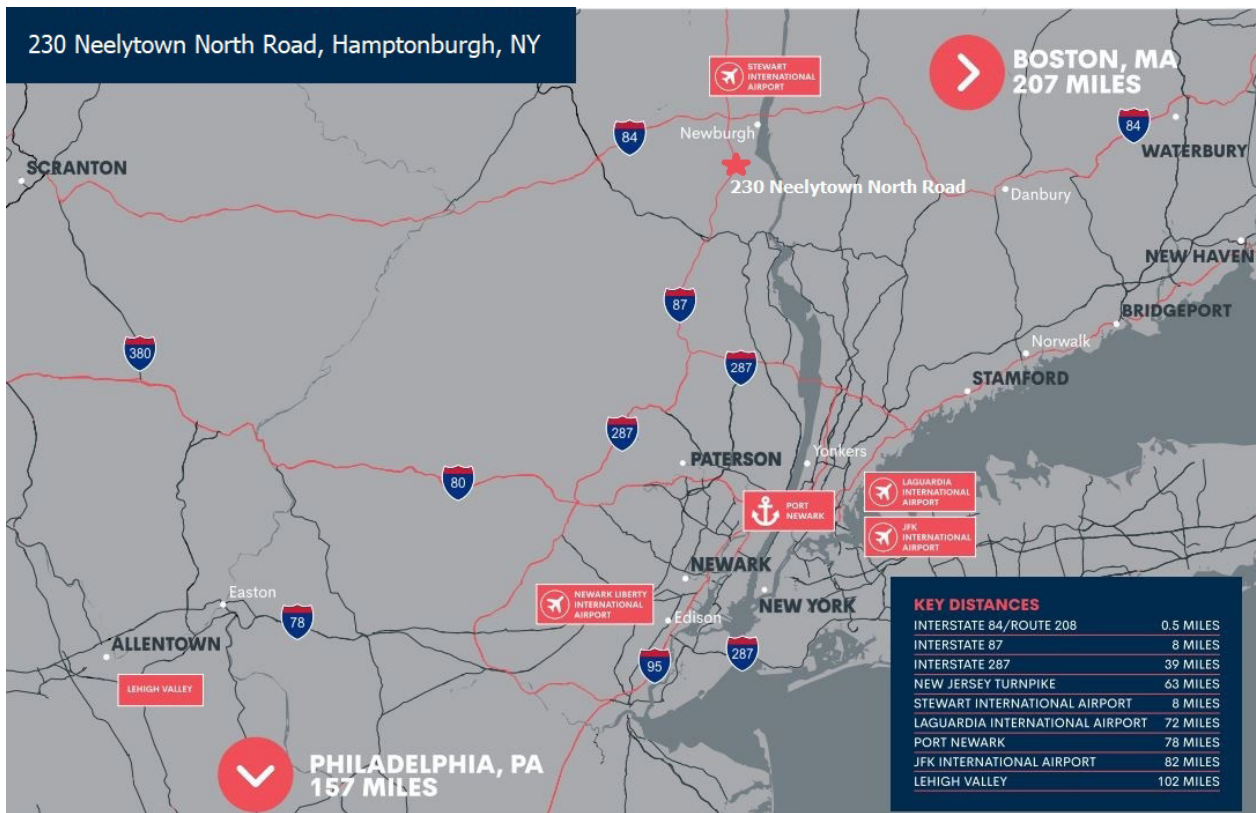
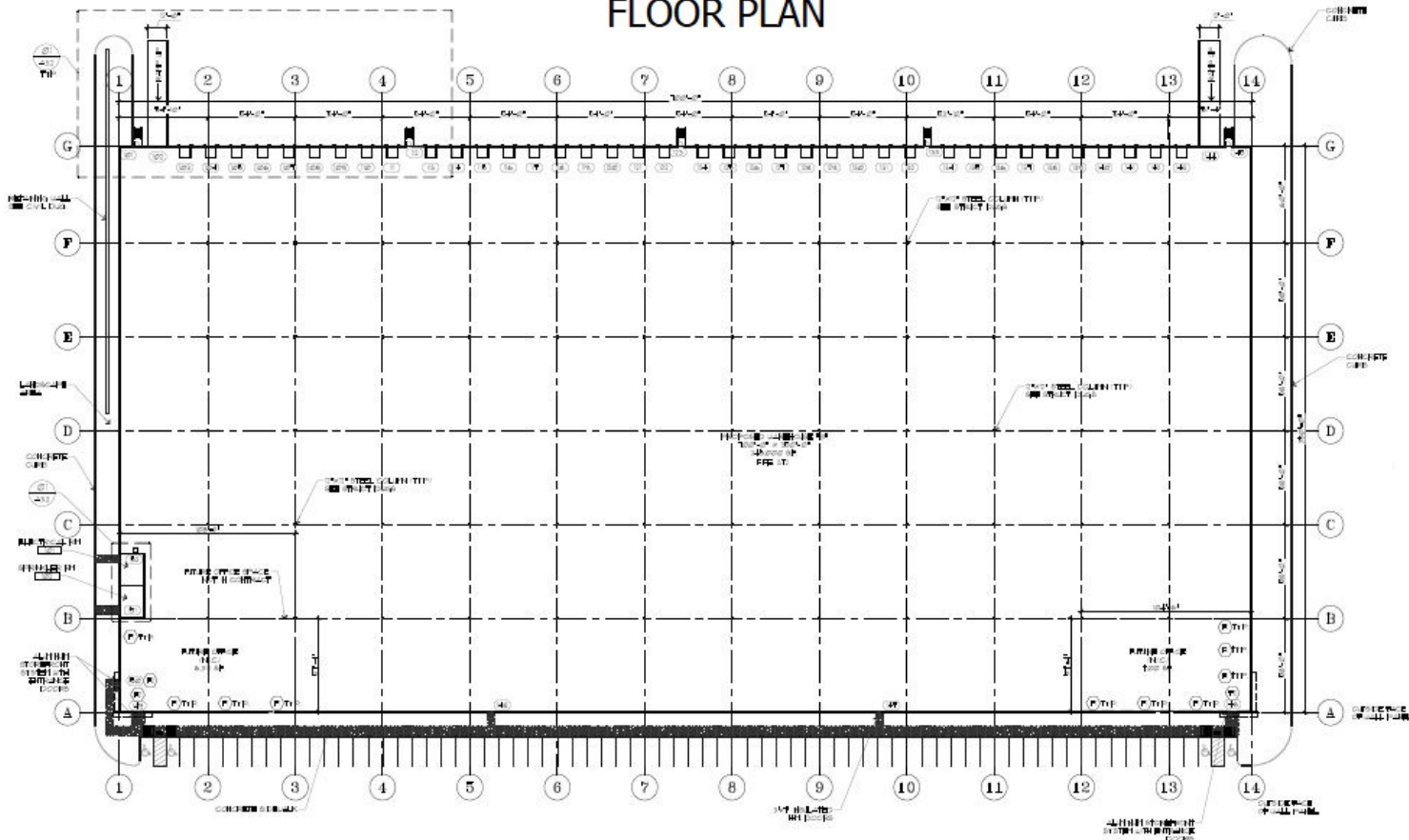
Exclusive Leasing Agent:



Resource Realty
Corporate Real Estate Services

www.resource-realty.com

FLOOR PLAN



All information furnished is from sources deemed reliable. No representation is made as to the accuracy thereof and it is submitted subject to error, omission, change of price, prior sale or lease and withdrawal without notice. Any commission due cooperating brokers is subject to all of the terms and conditions upon which we and our clients have agreed.

Exclusive Leasing Agent:



973-299-0900
www.resource-realty.com