

# 319 Richard Mine Road Wharton, NJ



## FOR LEASE

### PROPERTY SPECS:

Total Size Available: 10,880 SF  
Office Space: +/- 2,740 SF  
Asking Price: \$10.75 PSF NNN  
Tax/CAM: \$4.46 PSF  
Parking: 2/1,000 cars  
Ceiling Height: 18'  
Loading: 2 Loading Docks,  
1 Drive-in Door  
Columns: 40' x 33'  
Heat: Gas  
Water/Sewer: City Water/Sewer



Located directly off of Route 80. Quick local access to hotels, restaurants, and multiple big box retail locations at the Rockaway Mall.

*For more information, please contact:*

Brian Wilson, SIOR  
[bwilson@resource-realty.com](mailto:bwilson@resource-realty.com)

Scott Peck, SIOR  
[speck@resource-realty.com](mailto:speck@resource-realty.com)

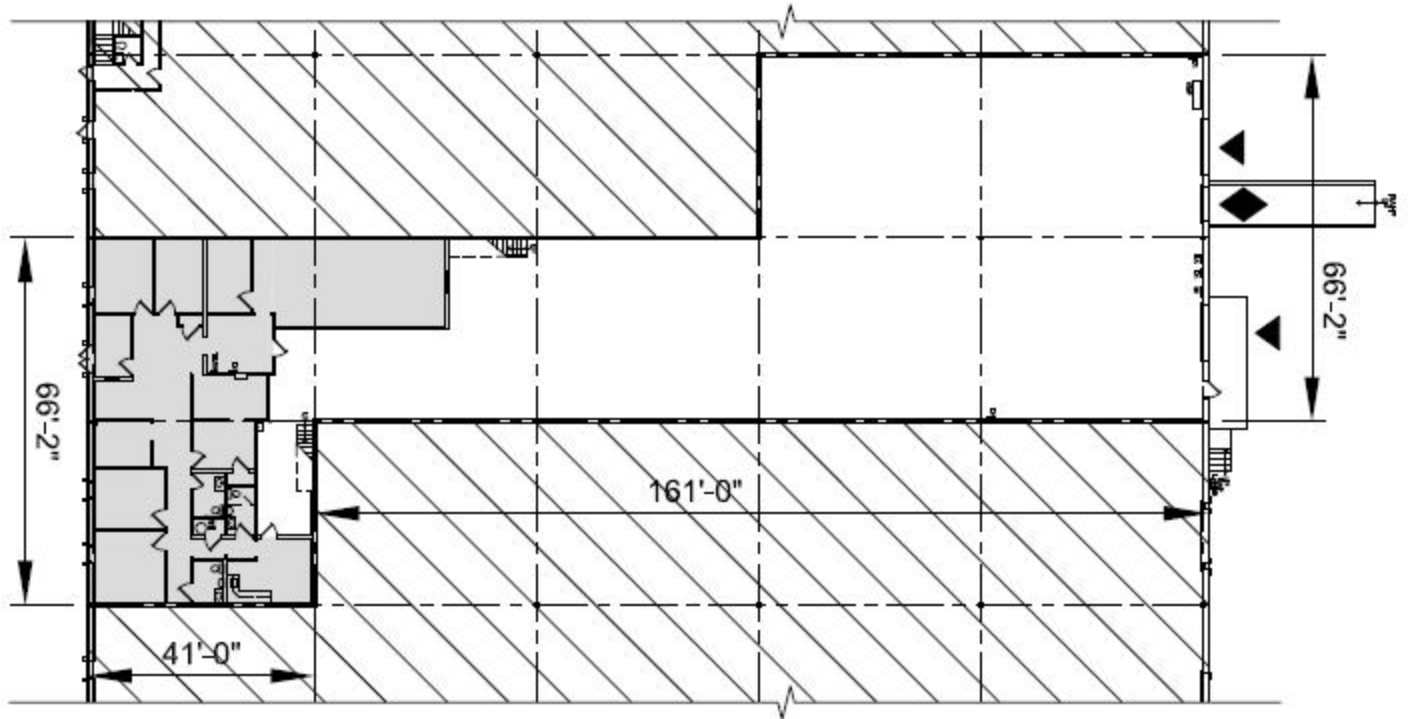
973-299-0900

*Exclusive Leasing Agent:*



**Resource Realty**  
Corporate Real Estate Services

[www.resource-realty.com](http://www.resource-realty.com)



All information furnished is from sources deemed reliable. No representation is made as to the accuracy thereof and it is submitted subject to error, omission, change of price, prior sale or lease and withdrawal without notice. Any commission due cooperating brokers is subject to all of the terms and conditions upon which we and our clients have agreed.

Exclusive Leasing Agent:



973-299-0900  
[www.resource-realty.com](http://www.resource-realty.com)