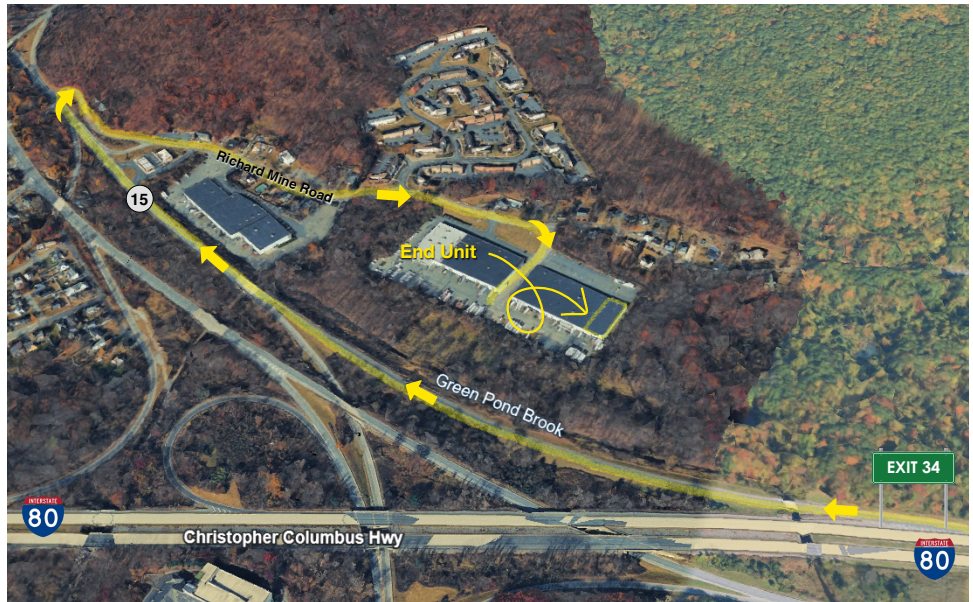


315-319 RICHARD MINE ROAD WHARTON, NJ



PROPERTY SPECS:

Unit Size:	13,671 SF
Office Area:	± 4,328 SF
Asking Price:	\$13.95 PSF NNN
Taxes/CAM:	± \$4.69 PSF
Ceiling Height:	18' Clear
Loading:	2 Tailgates
Zoning:	I
Available:	June 2026



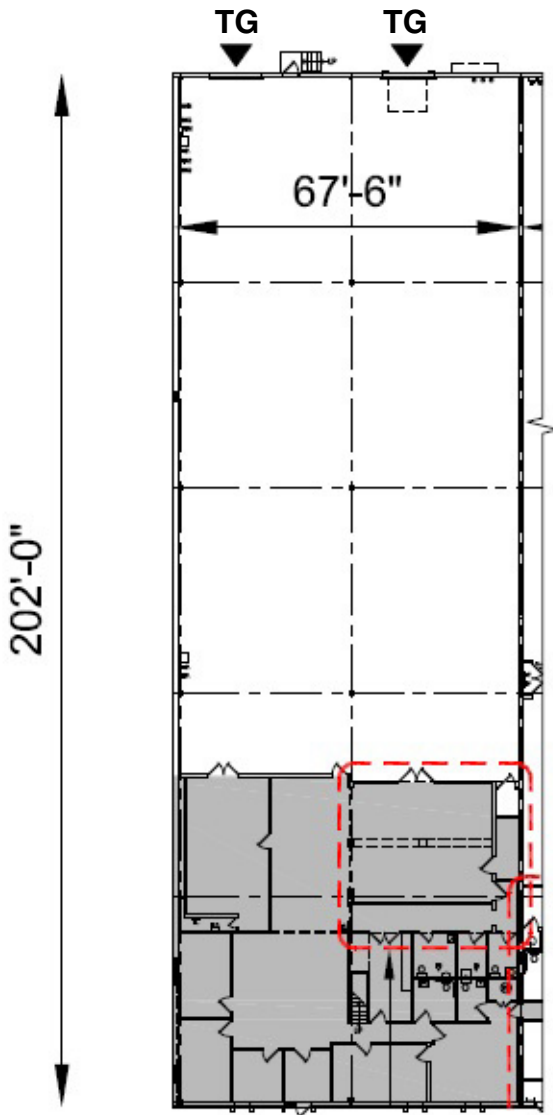
For more information, please call our office at 973-299-0900 or one of our exclusive Leasing Agents at:

Brian Wilson, SIOR
E: bwilson@resource-realty.com
C: 973-219-1331

Scott Peck, SIOR
E: speck@resource-realty.com
C: 973-568-0198

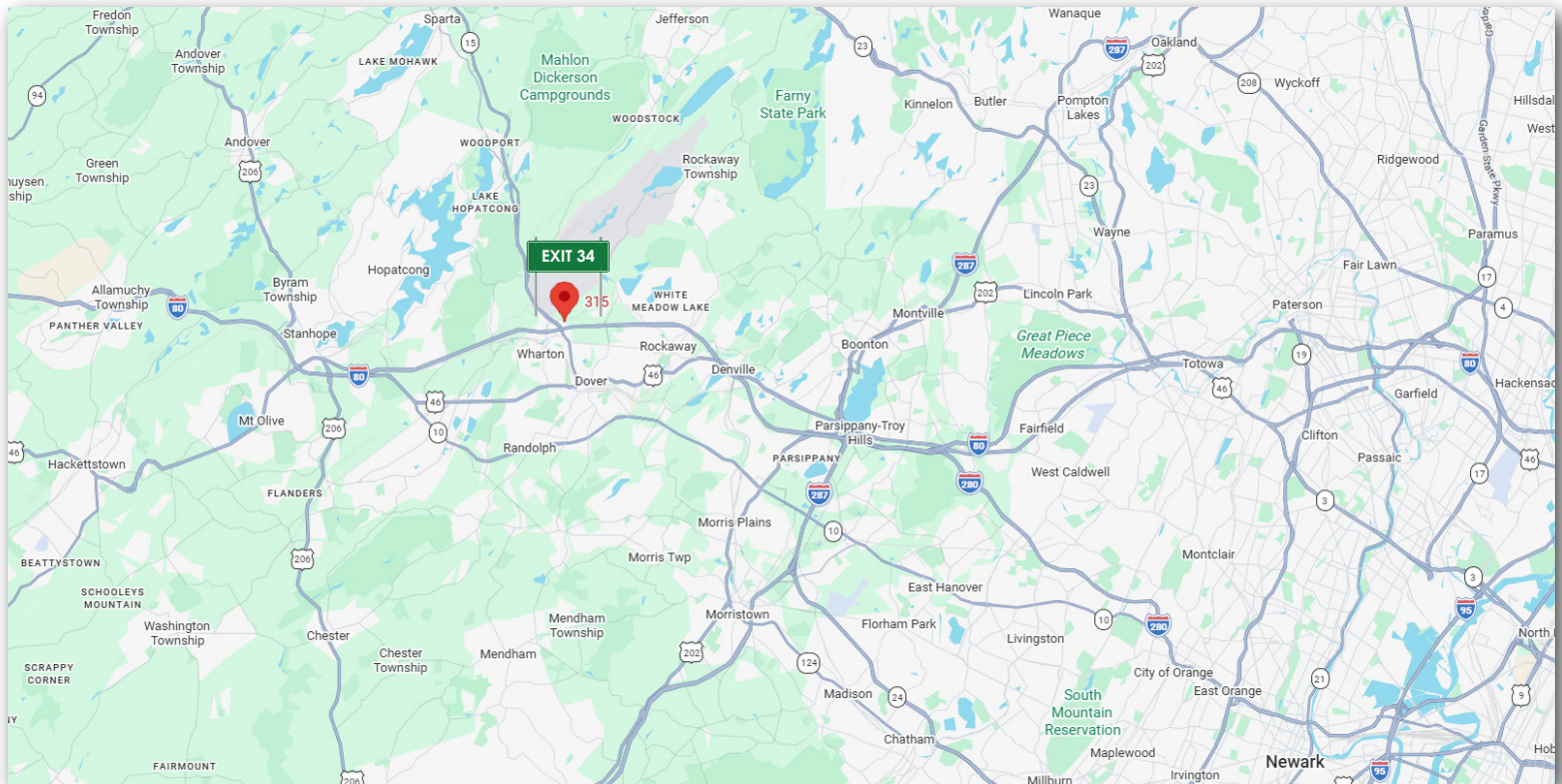
RR
Resource Realty
Corporate Real Estate Services

WWW.RESOURCE-REALTY.COM



HIGHLIGHTS:

Located directly off of Routes 15 & 80.
Includes a bonus finished 1,000 SF mezzanine.



All information furnished is from sources deemed reliable. No representation is made as to the accuracy thereof and it is submitted subject to error, omission, change of price, prior sale or lease and withdrawal without notice. Any commission due cooperating brokers is subject to all of the terms and conditions upon which we and our clients have agreed.