

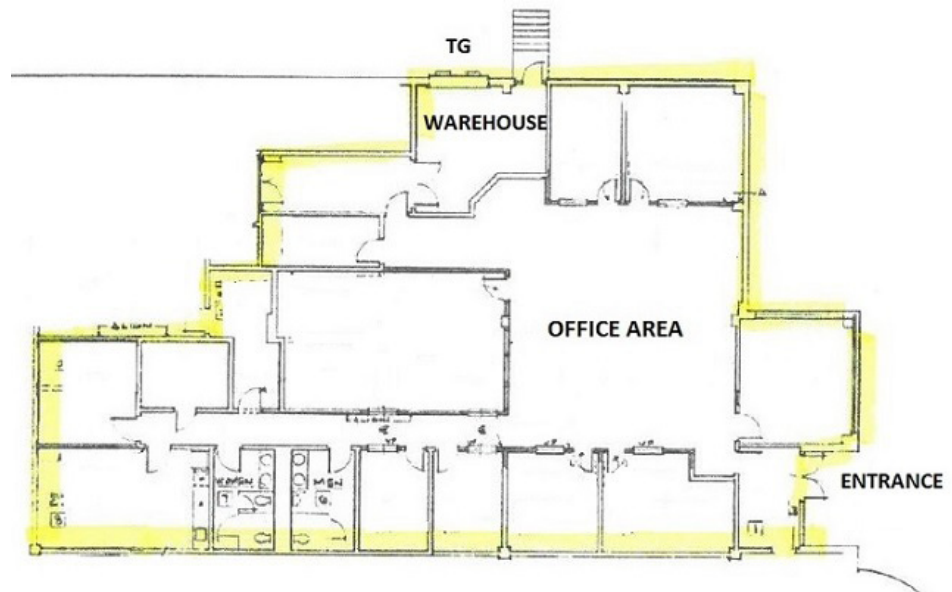
1 Stewart Court Denville, NJ



FOR LEASE

PROPERTY SPECS:

Available Space:	5,500 SF
Total Building:	14,000 SF
Ceiling Height:	14' clear
Loading:	1 Tailgate
Warehouse:	+/- 500 SF
Car Parking:	20
Occupancy:	Immediate
Lease Rate:	\$14.00 PSF NNN
Taxes and CAM:	\$4.50 PSF



For more information, please contact:

Scott Peck, SIOR
speck@resource-realty.com

Brian Wilson, SIOR
bwilson@resource-realty.com

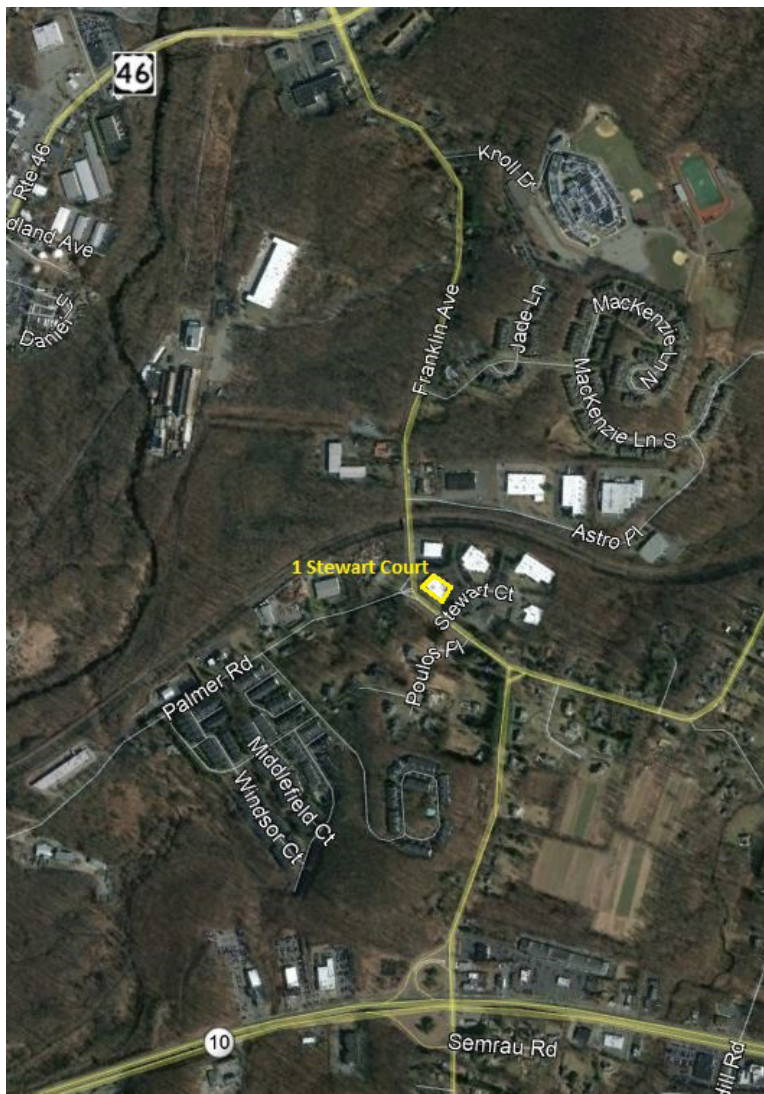
973-299-0900

Exclusive Leasing Agent:



Resource Realty
Corporate Real Estate Services

www.resource-realty.com



All information furnished is from sources deemed reliable. No representation is made as to the accuracy thereof and it is submitted subject to error, omission, change of price, prior sale or lease and withdrawal without notice. Any commission due cooperating brokers is subject to all of the terms and conditions upon which we and our clients have agreed.

Exclusive Leasing Agent:



973-299-0900
www.resource-realty.com