

Woodmont Park
601 N. Jefferson Road
Parsippany, New Jersey



FOR LEASE

PROPERTY SPECS:

Available Space:

- Suite 102 – 1,582 SF
- Suite 200 – 1,215 SF

Rental Rate: \$18.50 PSF Gross
plus Utilities

Building Size: 21,881 SF

Parking: 5/1,000 SF

Use: General/Medical Office

Availability: Immediate



For more information, please contact:

Brian Wilson, SIOR
bwilson@resource-realty.com

Gregory J. Sabato, SIOR
gsabato@resource-realty.com

973-299-0900

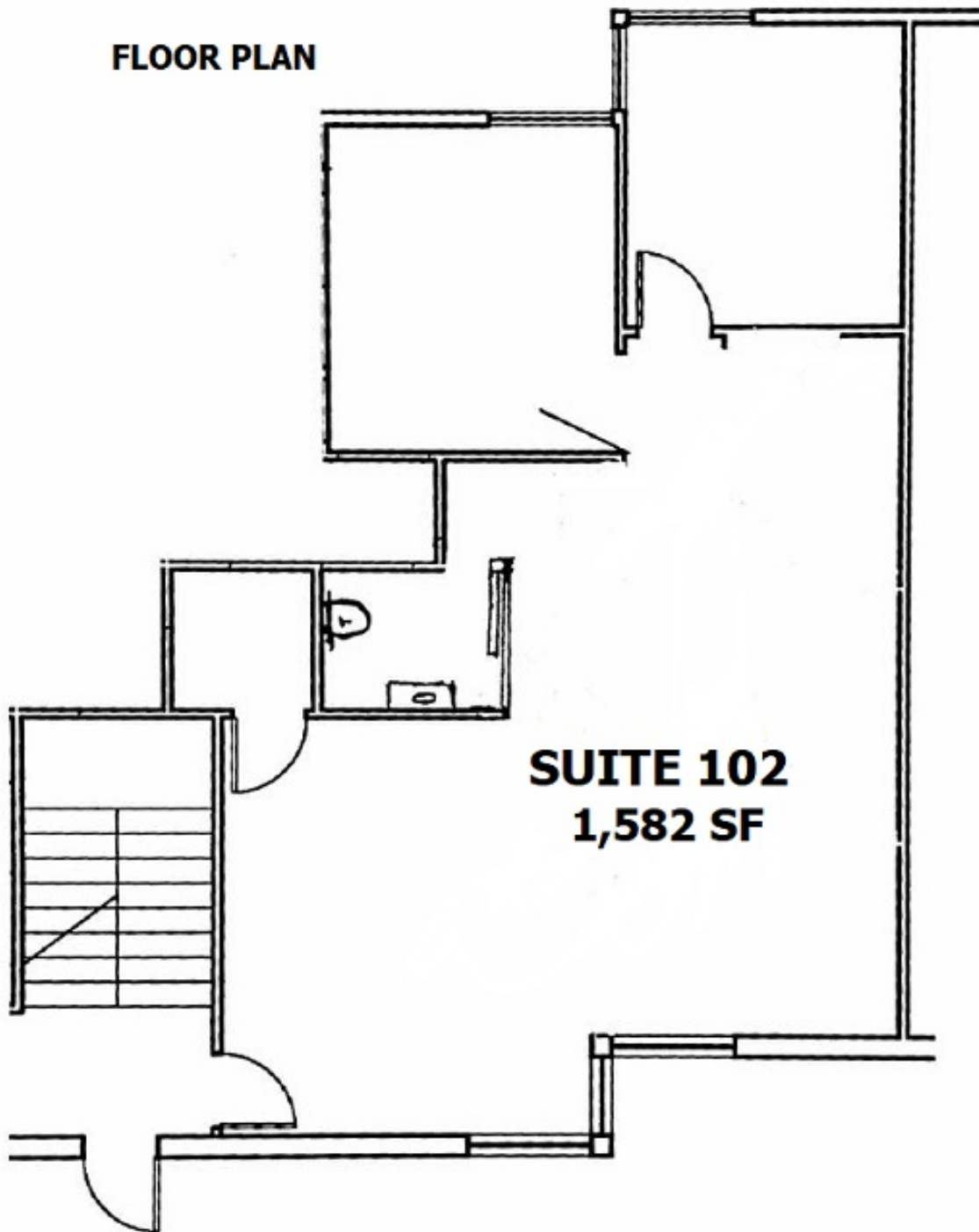
Exclusive Leasing Agent:



Resource Realty
Corporate Real Estate Services

www.resource-realty.com

FLOOR PLAN



SUITE 102
1,582 SF

All information furnished is from sources deemed reliable. No representation is made as to the accuracy thereof and it is submitted subject to error, omission, change of price, prior sale or lease and withdrawal without notice. Any commission due cooperating brokers is subject to all of the terms and conditions upon which we and our clients have agreed.

Exclusive Leasing Agent:



973-299-0900
www.resource-realty.com