

Woodmont Park
601 N. Jefferson Road
Parsippany, New Jersey



AVAILABLE FOR SALE OR LEASE

PROPERTY SPECS:

Building Size: 21,881 SF

Available Space: 2,100 SF – 1st Floor
1,584 SF – 1st Floor
516 SF – 1st Floor

Lease Price: \$18.50 PSF Gross + Utilities

Parking: 5/1,000 SF

Use: General Office

For more information, please contact:

Brian Wilson, SIOR
bwilson@resource-realty.com

Gregory J. Sabato, SIOR
gsabato@resource-realty.com

973-299-0900

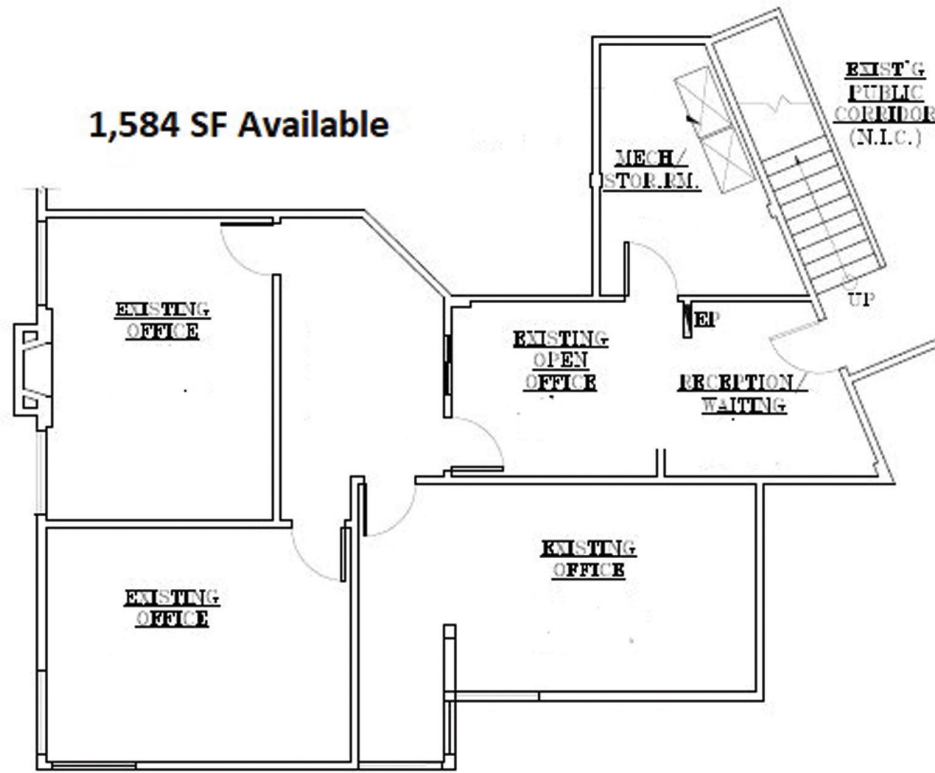
Exclusive Leasing Agent:



Resource Realty
Corporate Real Estate Services

www.resource-realty.com

1,584 SF Available



All information furnished is from sources deemed reliable. No representation is made as to the accuracy thereof and it is submitted subject to error, omission, change of price, prior sale or lease and withdrawal without notice. Any commission due cooperating brokers is subject to all of the terms and conditions upon which we and our clients have agreed.

Exclusive Leasing Agent:



973-299-0900
www.resource-realty.com